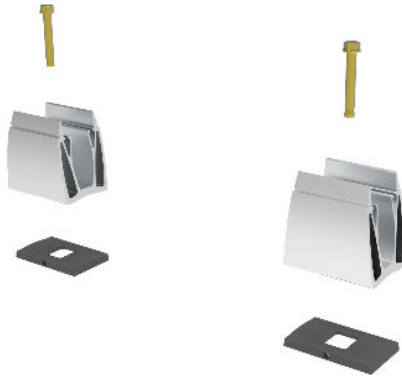




SPIG-LITE^{advance}

INSTALLATION GUIDE

1.



INSTALL THE SPIGOTS

Position the spigots at 500mm centres on 1 metre panels, starting at 250mm from the end.

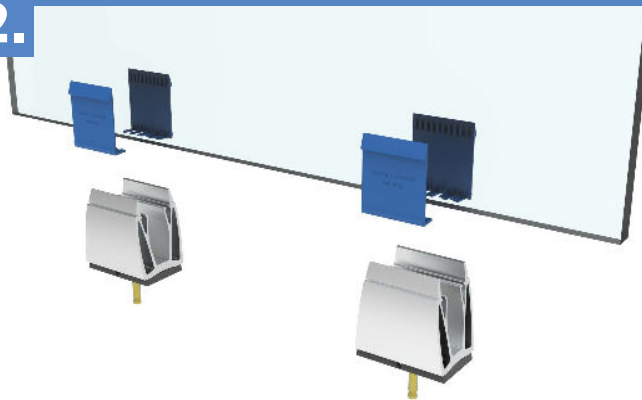
Install the spigots to your steel or concrete substrate using an appropriate M12 screw or bolt. All the bolts must be tightened to the bolt manufacturers specification.

It is strongly recommended to measure for glass after installation of the Spigots. A gap of no less than 10mm between the glass should be used.

Note: Waterproofing may need to be considered, image is showing the optional BalconySeal® system below the SPIG-LITEadvanced system.

Draining of the profile for external installations is required, we advise either drilling an end plate or drilling the profile to prevent submersion of the glass.

2.



MAKE CLAMPS AND ATTACH TO GLASS

The glass slip clamps need to be placed on the bottom of the glass. This requires lifting the glass off the floor sufficiently on to some plinths.

Loosely slide the clamp halves together allowing them to be placed onto the glass. They need to be positioned in-line with the spigots and squeezed tight.

The glass can now be lowered into the system.

3.



FIT THE ADJUSTMENT MECHANISM

Place the cap screw through the clamp bar and loosely screw on the rectangular nut.

The bar should be turned so the angled side of the bar is nearest to the glass.

The unit needs to slide in from the side, with the rectangular nut slotting into the top of the 'V' in the profile.

POSITION THE GLASS

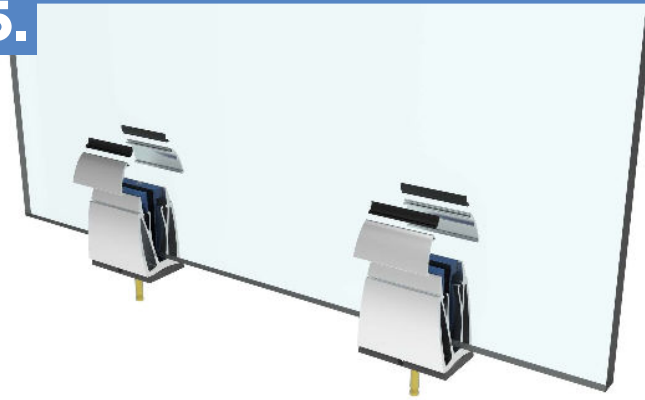
To adjust the glass use a 5mm Hex Key to tighten the screws to get the glass in its desired position.

Once the glass is correct, both sides need to be tightened down using a torque wrench.

The cap screws all need to be at 6Nm.



5.



ATTACHING THE TOP CLIPS

The gasket needs to be inserted into the rebates in the top clips. Once lined up, the gasket can be cut to size.

With the gasket attached the clips, slide this on to the main spigot unit from either side.

A dab of neutral cure silicone (or other non-corrosive adhesive) should be applied to the underside of the bead to ensure they cannot come off easily.

6.



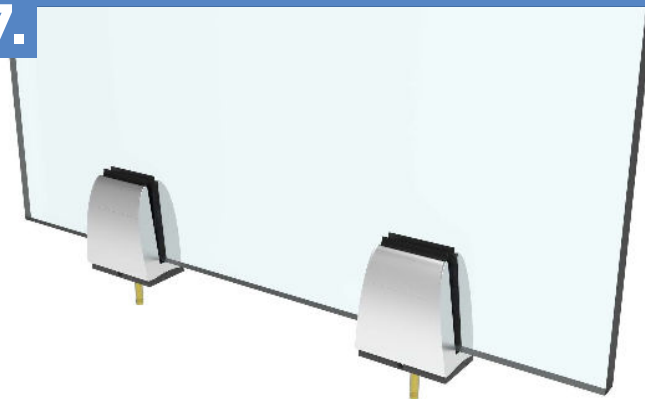
FITTING THE END CAPS

The end caps now need to be adhered into position on the SPIG-LITEadvanced.

A small bead of neutral cure silicone (or other non-corrosive) adhesive needs to be applied to the outer lines of the profile. The end cap can then be pressed into position.

A clean dry cloth or paper towel should be used to wipe away and excess adhesive which is expelled.

7.



CLEANING THE SYSTEM

Once everything is set the system needs to be cleaned.

Warm water with a neutral detergent can be used on the SPIG-LITEadvanced with a non-advasive cloth.

Please refer to the Operating and Maintenance manual for further maintenance instructions