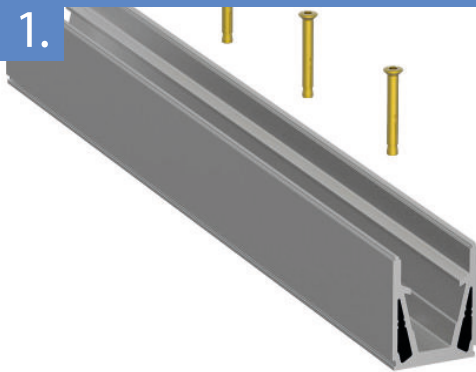




# MEGAgrip Base Fix

## INSTALLATION GUIDE

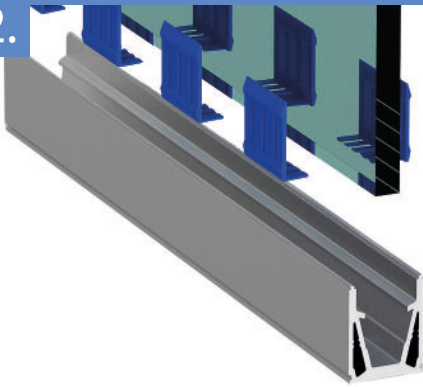
1.



### FIT THE CHANNEL

The MegaGrip base rail can be placed into its designated position and the holes marked on the substrate as a guide for drilling. Remove channel, then drill holes. Once the balustrade is level insert the M12 bolts and tighten to the manufacturers instructions. We strongly recommend measuring and ordering the glass once the channel has been installed. A minimum of 5mm gaps should be left between the glass. If cutting the channel make sure all metal filings (swarf) are removed. \*

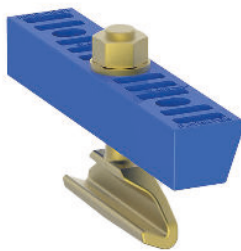
2.



### CLAMP THE GLASS

Make the clamps by slotting the left and right sides together. Clamp these to the bottom edge of the glass at 250mm intervals, starting from 125mm from the first edge, use 4 per metre. Squeeze the clamps tight around the glass and position the panel into the balustrade channel. The glass can now be lowered into the channel, the clamps will need to avoid the bolt heads so a small amount of adjusting may be required.

3.

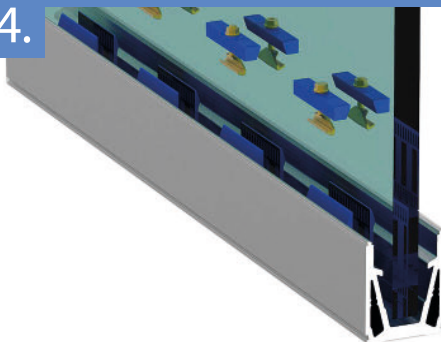


### PREPARE THE MEGAHOOK

The clamp bar needs to be slid over the threaded end of the MEGAhook, so that the hook is nearest the narrow part of the plastic bar. The nut needs to be loosely tightened so the bar can easily spin into the correct position before it is positioned in the channel.

We would advise doing this prior to installation to save time on site.

4.



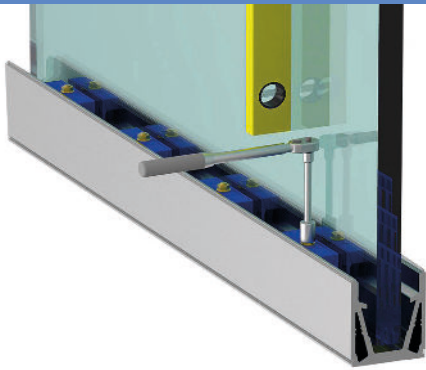
### INSTALL THE MEGAHOOK

With the glass in the channel the hooks need to be fitted. The MEGAhooks are designed to grip on the lip within the channel. Lower the hook next to the glass clamp, use the hook to catch the metal lip of the base channel and slide over so it lines up with the glass clamp. The angled side of the bar must face the clamp. The glass may need to be push/pulled to allow the hook into position.

\*MegaGrip is counter-bored and suits standard hex head bolts BlastGuard channel is counter-sunk and countersunk (CSK) bolts must be used. When fitting to metalwork a barrier between different metal types must be used. Additional waterproofing may be required. In extreme temperature changes the profiles may expand and contract. Small gaps may need to be left between profiles.



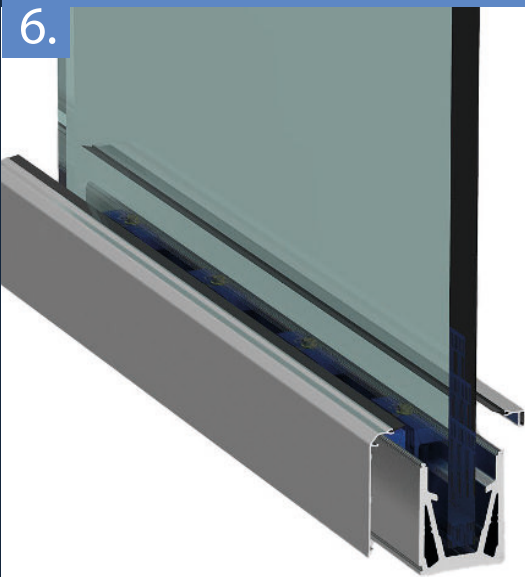
5.



### ADJUST THE GLASS

Whilst the nuts are still loose place a spirit level on the glass, manoeuvre the glass in the desired position by pushing/pulling the glass. Now the nuts can be tightened, using a hand/ratchet screw the nuts will be tight against the clamp bars. Using a torque bar ensure each nut is tightened to 15Nm. Use a 1/4" torque wrench with 13mm hex socket.

6.



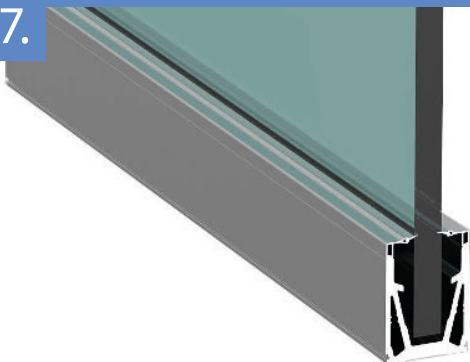
### ADD TOP BEAD, SIDE CLADDING AND END CAPS

The gasket requires feeding into rebates on the smaller profiles, do not stretch the gasket. Once the gasket is flush with each end of the strip, clip it onto the top of the channel. This can be done by pressing firmly down on the profile working from one end to the other. A soft mallet may be required.

The side cladding hooks over the main channel, this must be secured with an adhesive or tape.

End caps need adhering to the channel. To keep water from submerging the glass we suggest drilling the end caps below the glass line with a 8mm hole. Other draining methods may need to be considered depending on the size of the balustrade.

7.



### FINISH INSTALLATION

Once everything is correctly in place, the glass and channel will need to be cleaned. Using a non-abrasive glass cleaner for the glass and warm soapy water for the channel. We recommend using a soft cloth to avoid scratches. Refer to the operating and maintenance manual for further maintenance.

Should any problems arise or you have any questions please don't hesitate to contact us:

T: +44 (0)1208 261 040

F: +44 (0)1208 261 041

E:- sales@pure-vista.com

www.pure-vista.com