



POSI Base Fix With Steel Fixing Plate INSTALLATION GUIDE

Parts Included

Steel plate x 15
M12 bolts x 15
M12 Washer x 15

Tools Required

Drill
13mm Diameter HSS Drill Bit
4mm Diameter HSS Drill Bit
Hammer
Punch
19mm Hex Socket
Wrench
Tape Measure
Pencil

Safety

Please wear eye protection
and ear protection

Should any problems arise or you have any questions please don't hesitate to contact us:

T: +44 (0)1208 261 040

F: +44 (0)1208 261 041

E:- sales@pure-vista.com

www.pure-vista.com



POSI Base Fix With Steel Fixing Plate

INSTALLATION GUIDE

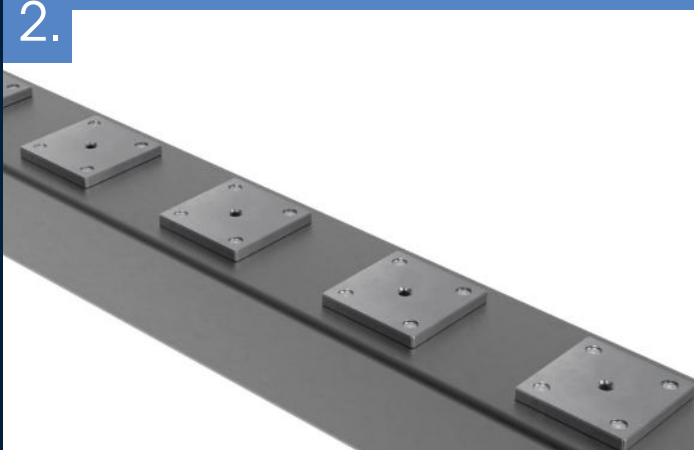
1.



DRILL THE HOLES

Use the POSIglaze channel to mark the position of the main fixing holes, then drill the holes to 13mm. Next, use the fixing plates to mark the 4 fixing holes. Drill all the pilot holes to 4mm before moving on.

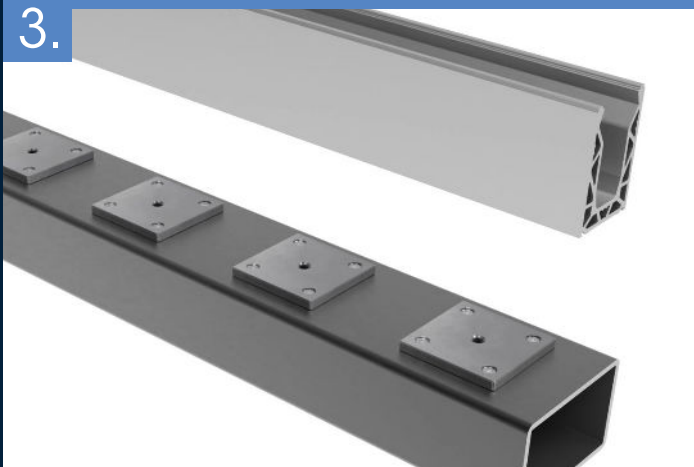
2.



PLACE THE FIXING PLATE

Attach the Steel Plates by screwing in the supplied self-drilling screws.

3.



FIT THE CHANNEL

Place the POSI base channel back into position, on top of the Steel Plates. Ensure all the bolt holes line up correctly before proceeding to fix the channel with M12 bolts and washers. Continue with the POSI and glass installation as normal.

Should any problems arise or you have any questions please don't hesitate to contact us:

T: +44 (0)1208 261 040

F: +44 (0)1208 261 041

E: sales@pure-vista.com

www.pure-vista.com